

Historic Gas Company Lofts

Historic Gas Company Lofts Apartments Printable Brochure - Los Angeles Apartments

810 S. Flower St.
Los Angeles, CA 90017
Ph: (213) 261-7335

Brochure Powered By:

apartmenthomeliving
live for funSM

Historic Gas Company Lofts Apartments

South park Apartments

Historic Gas Company Lofts offers studio, 1, & 2 bedroom loft apartment homes and is located in one of LA's most walkable districts in the heart of downtown. Imagine living, working and playing in an exquisitely restored historic landmark building. The building offers extraordinary city views that capture the imagination and open floor plans with limitless options to tap your creativity. We are located near The Staples Center, Ralph's Super Market, as well as some of LA's hottest new restaurants, hip nightclubs, coffee houses, health clubs, spas, and retro-chic boutique hotels! The historic architecture of our buildings is complimented by modern finishes in each individual loft, creating a signature building and luxurious living environment. We provide on-site

LUXURY
SOPHISTICATION

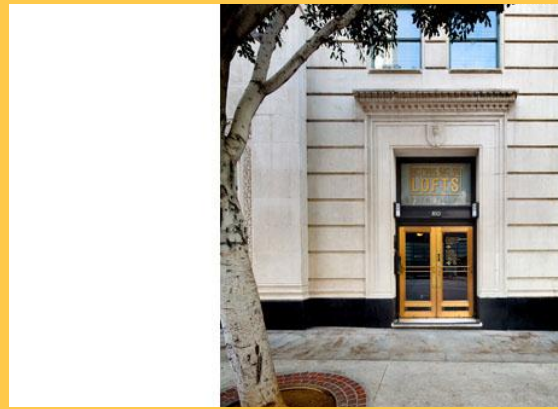
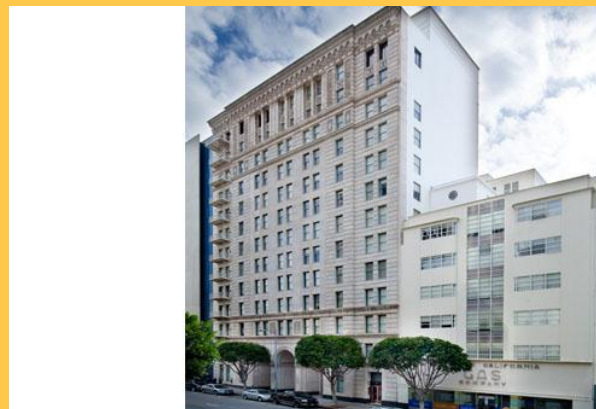


Historic Gas Company Lofts Apartments

South park Apartments

RELAX
WELCOME HOME

concierge and management services, 24-hour courtesy patrol, multi-camera monitoring, keycard controlled access entry, spacious storage units and covered residential parking. You can now pay rent by MasterCard, Visa and ACH.



Historic Gas Company Lofts Apartments

South park Apartments

AMENITIES

Community Features

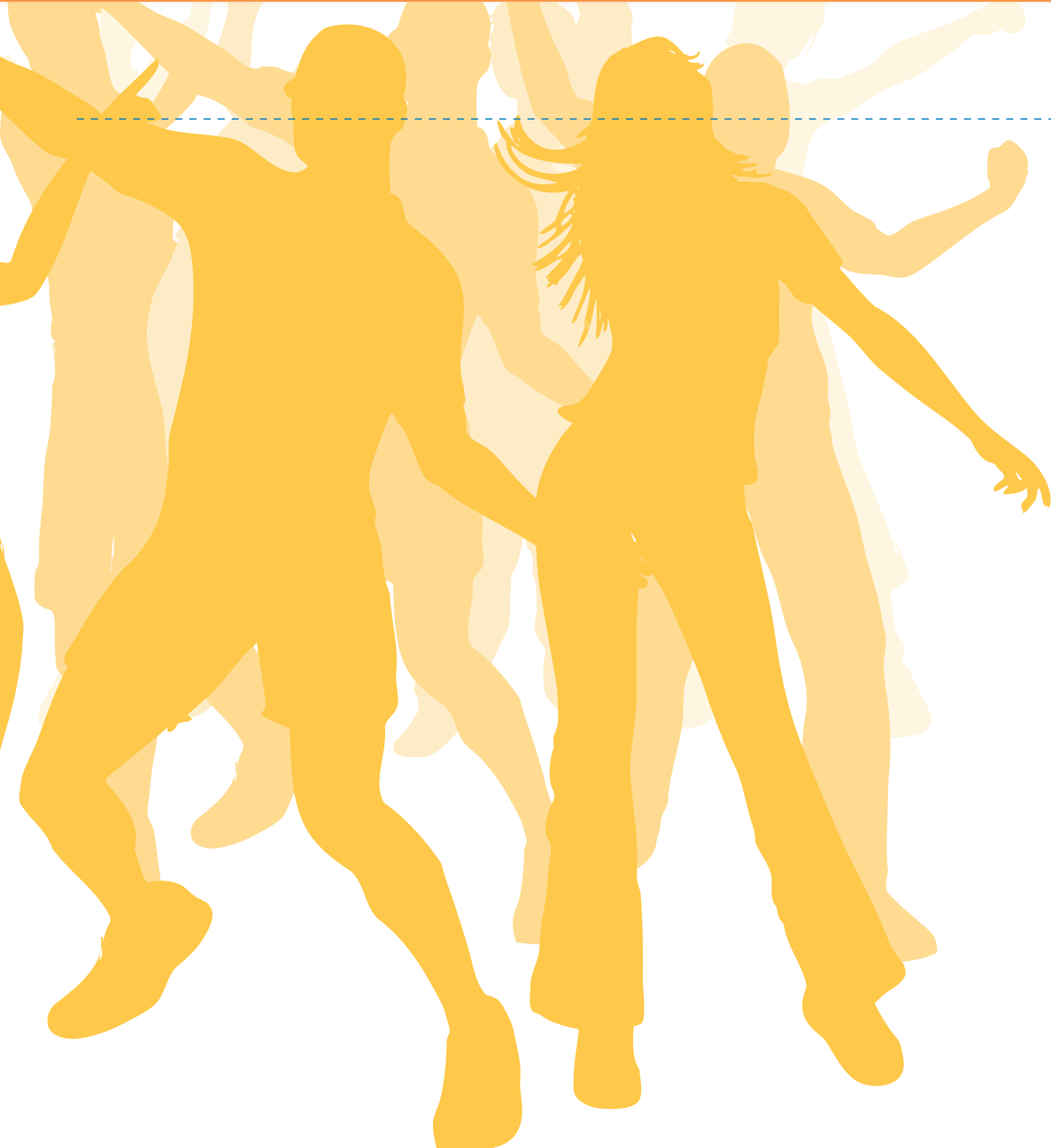
- Air Conditioning
- Onsite Laundry
- Walk-in Closet
- Wireless Internet
- Access Gates
- Cable-Ready
- Short-term Available
- Cats Allowed
- Small Dogs Allowed
- Wheelchair Accessible



Historic Gas Company Lofts Apartments

South park Apartments

AVAILABLE FLOORPLANS



Loft 06 - Studio - One Bath - 643 sq.ft.

Loft 12 - One Bedroom - One Bath - 1047 sq.ft.

Loft 16 - Two Bedroom - Two Bath - 1305 sq.ft.

Loft 02 - One Bedroom - One Bath - 1102 sq.ft.

Loft 04 - Studio - One Bath - 658 sq.ft.

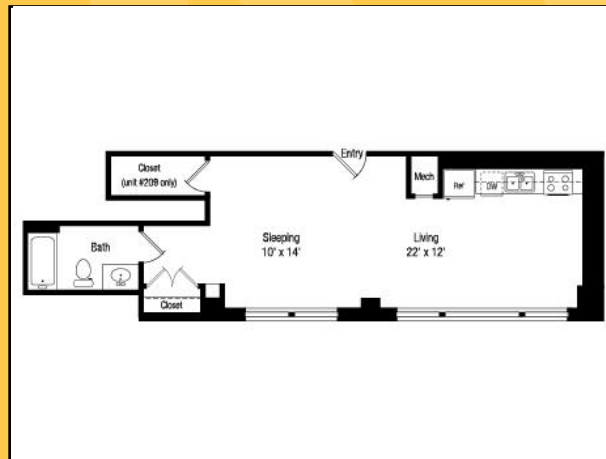
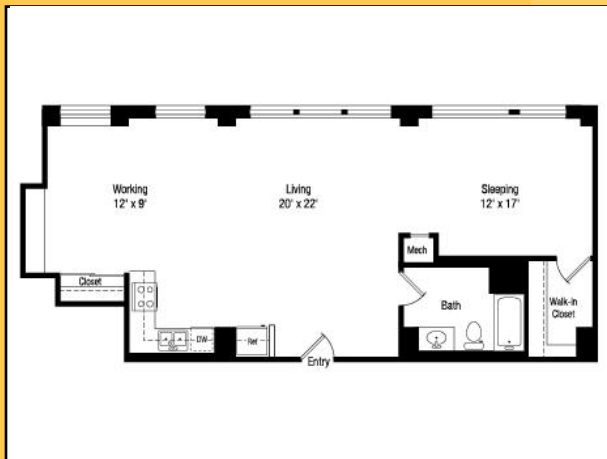
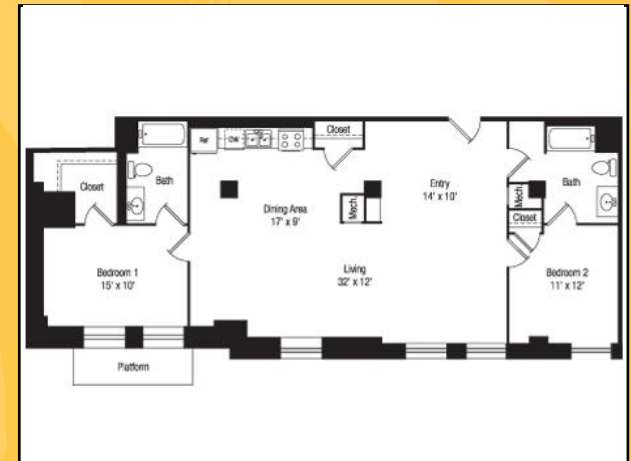
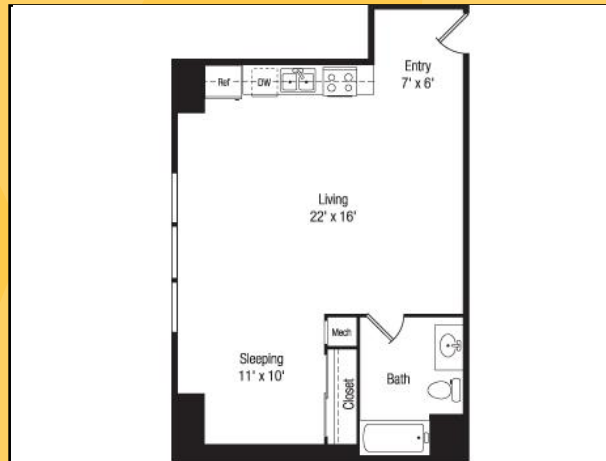
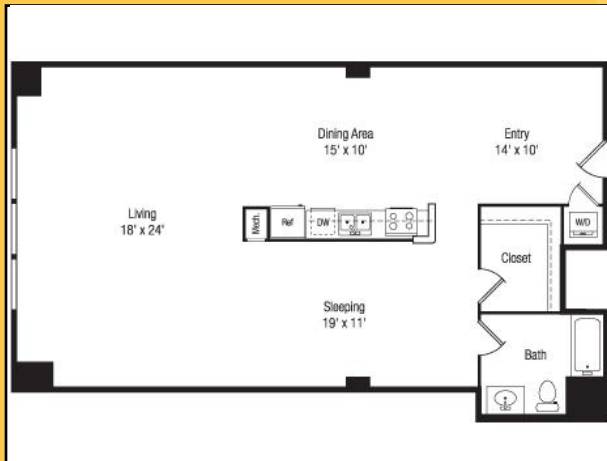
Call for Current Rates

(213) 261-7335

Historic Gas Company Lofts Apartments

South park Apartments

FLOORPLANS



Historic Gas Company Lofts Apartments

South park Apartments

Directions: Take the I-110 Freeway north to the Downtown: 6th Street/9th Street exit (22A). Take the 6th Street ramp going east and turn right onto Flower Street. Historic Gas Company Lofts is located two blocks down on the left side, on the southeast corner of 8th and Flower Streets. Take the 110 Freeway south to the 6th Street/4th Street exit toward 110 S/Wilshire Boulevard/Downtown. Take the ramp toward Wilshire Boulevard and take the 6th Street ramp, then turning right onto Flower Street. Historic Gas Company Lofts is two blocks down on the left side at the southeast corner of 8th and Flower Streets. Take the 10 Freeway to the 110 Freeway north. Take the Downtown: 6th Street/9th Street exit (22A). Take the 6th Street ramp going east and turn right onto Flower Street. Historic Gas Company Lofts is two blocks down on the left side, on the southeast corner of 8th and Flower Streets.

**apartment
homeliving**
live for fun SM



**Historic Gas
Company Lofts**



810 S. Flower St.
Los Angeles, CA 90017
Ph: (213) 261-7335

Brochure Powered By:

apartmenthomeliving
live for fun SM